

PORTELLA

Palma de Mallorca

A House Next to the Arab Baths

Nestled in a palace from the 17th century, Portella is a manor house with Moorish and Baroque influences. It is built around a lushly landscaped patio, a haven of tranquillity amid the hustle and bustle of Palma. A very intimate residence that makes you feel a peace.

The rehabilitation works have been based on mud, natural stone, iron and wood using local materials and working with Mallorca's finest craftsmen, with the idea that beautiful things develop a unique patina over time.

Opening early 2024, Portella offers 14 exclusive rooms with a perfect combination of history, tradition, and design. The best materials and fabrics have been carefully selected to deliver an extraordinary and authentic experience.

Taking care of every single interaction, our staff will help you to get the most of your stay removing the transactional nature of hospitality and service, making you feel home and enjoy an unforgettable experience.





CAN SERRA

Our cosiest connecting room is located on the ground floor of the building with views of the internal patio. This guest room comprises two bedrooms and two bathrooms, making it ideal for short group or family getaways.

46 m²

FEATURES

46m2

UP TO 4 GUESTS

AIR CONDITIONING

SMART TV

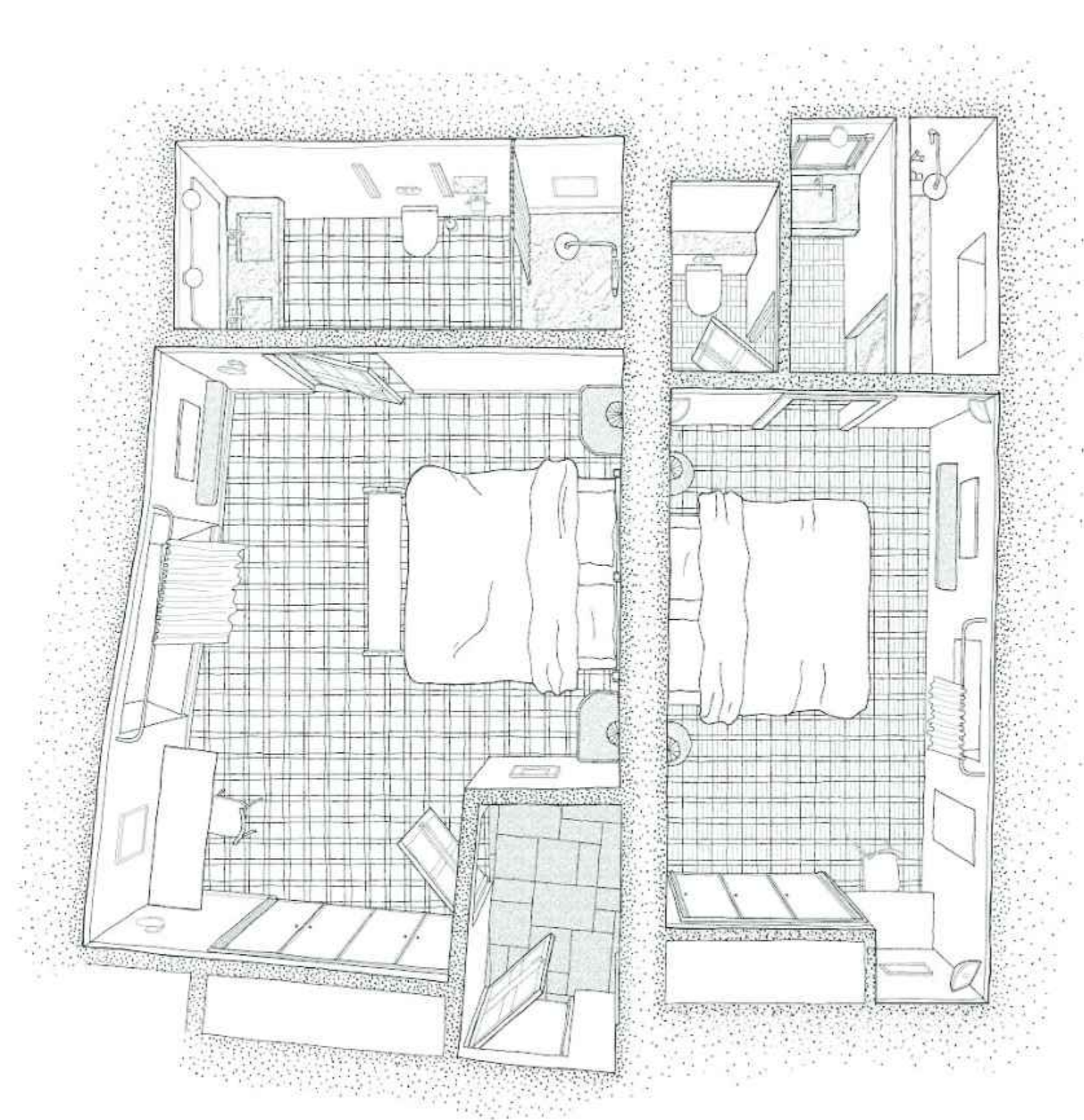
HIGH SPEED INTERNAT

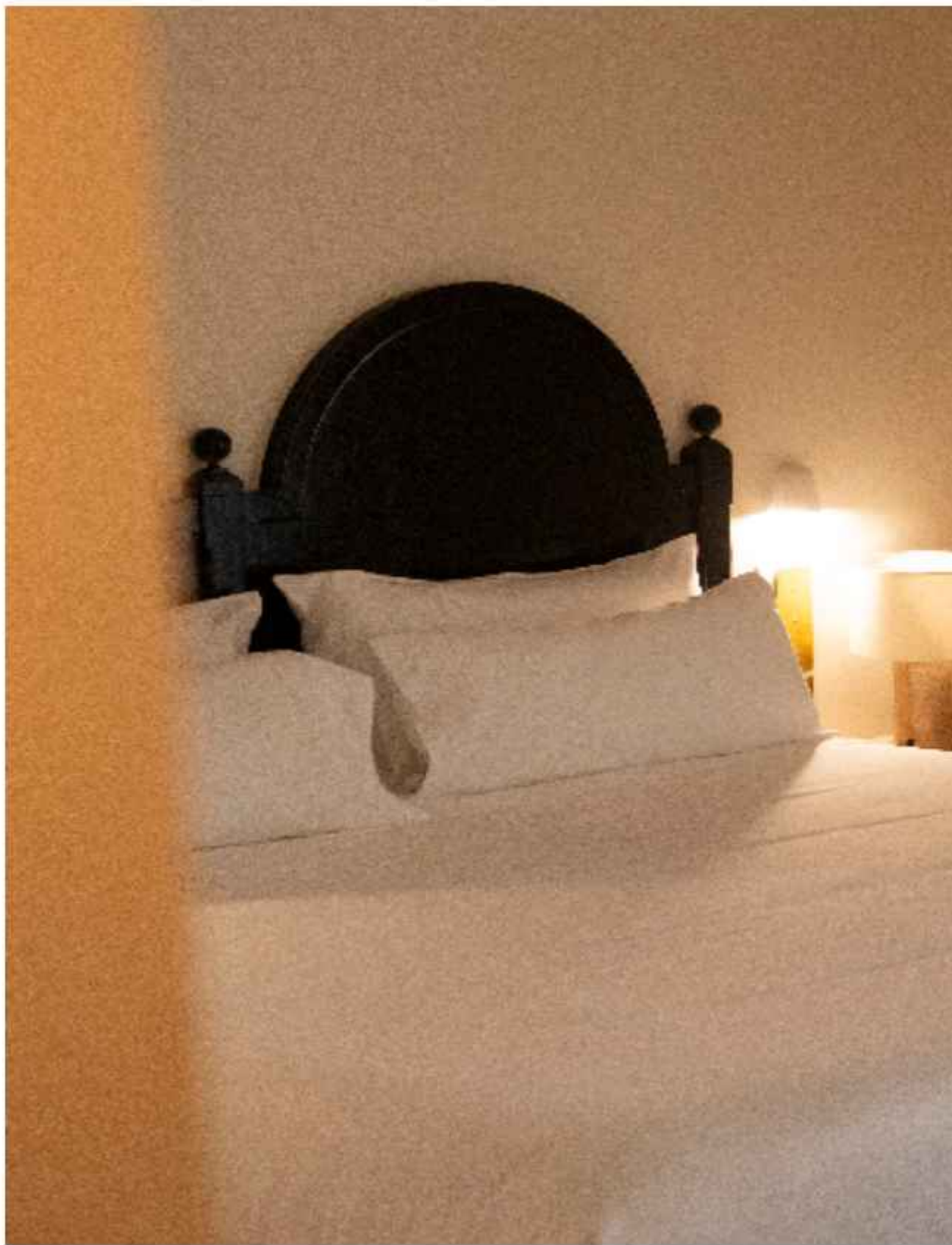
BARTHROOM ACCESORIES

MINIBAR

CEILING FAN

TWIN ROOM AVAILABILITY





CAN SERRA PATIO

Known for its spectacular views of the patio and historical city of Palma, the Can Serra Patio Suite is located in the heart of the building. Consisting of two bedrooms that are bathed in natural light, the room has a small lounge and reading gallery.

52 m²

FEATURES

52m2

AIR CONDITIONING

HIGH SPEED INTERNET

MINIBAR

SOFABED

GALLERY

UP TO 5 GUESTS

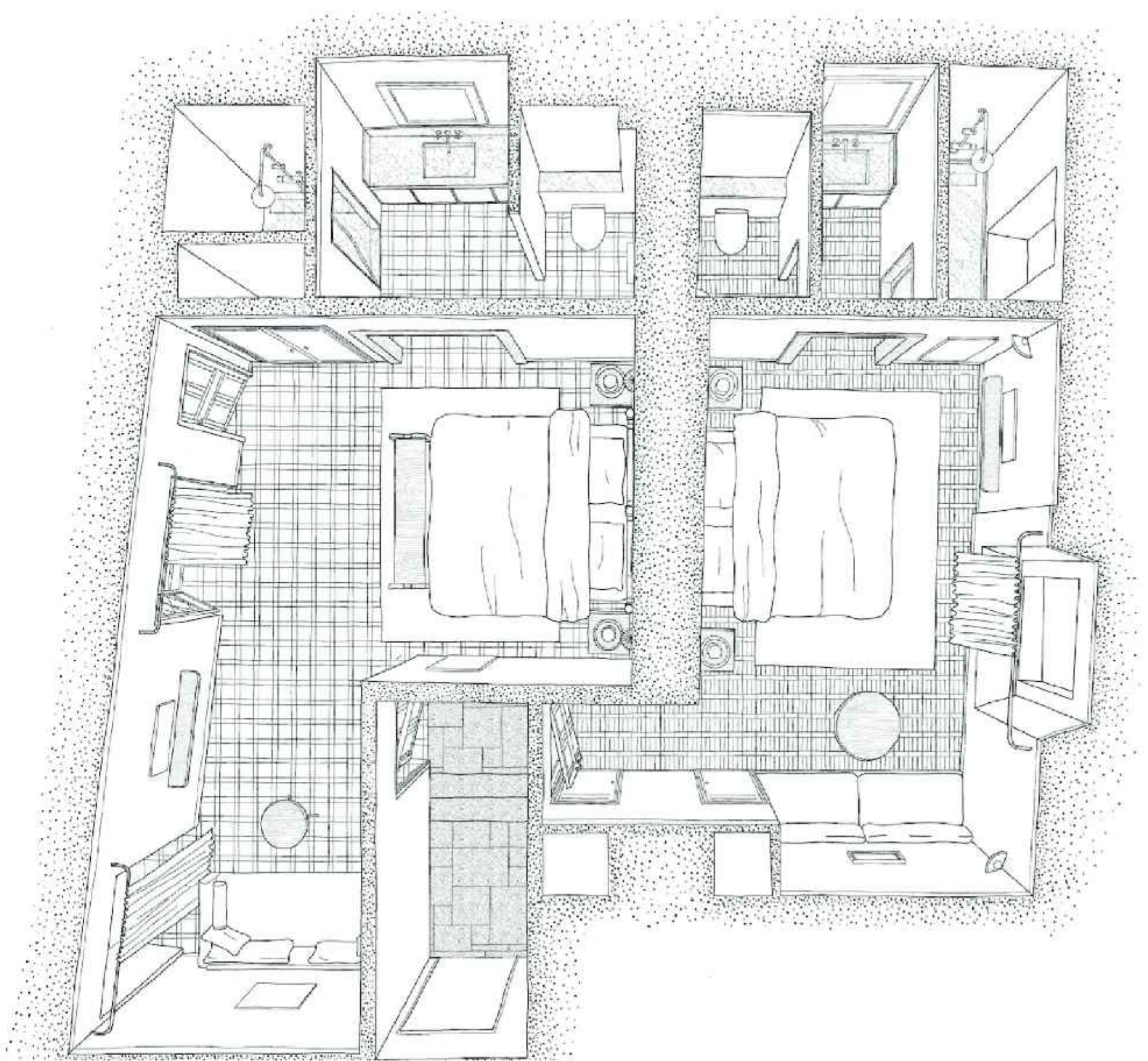
SMART TV

BATHROOM ACCESORIES

CEILING FAN

COFFEE/TEA MAKER

VIEWS





SANTA CLARA

At the highest part of the building, bathed in the morning sun, we find this attic suite offers magnificent views of the Santa Clara Convent. It has two double bedrooms and independent bathrooms, kitchen, a living room and access to the building's terrace.

58 m²

FEATURES

58m2

UP TO 5 GUESTS

AIR CONDITIONING

SMART TV

HIGH SPEED INTERNET

BATHROOM ACCESORIES

MINIBAR

CEILING FAN

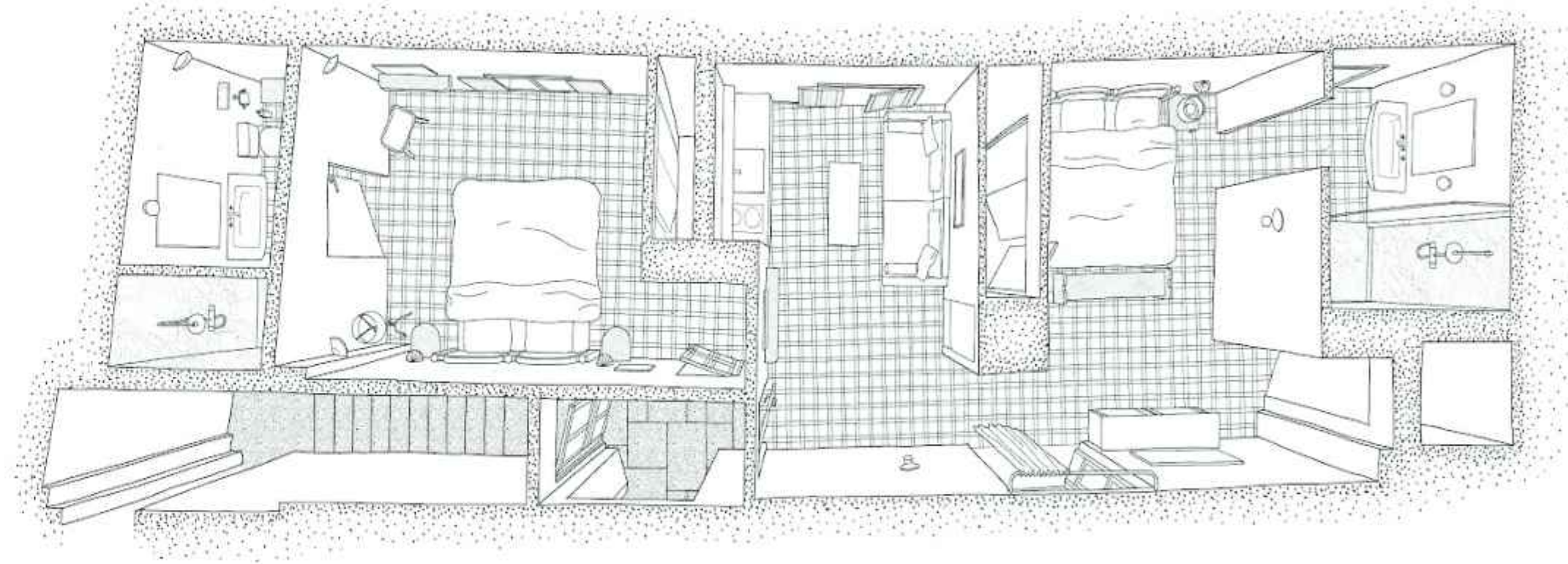
SOFABED

LOUNGE

TERRACE

AIRPORT PICKUP

VIEWS





ARAB BATHS APARTMENT

This 70 square meter apartment offers spectacular views of the historic Arab Baths of Palma. It features two separate bedrooms, a kitchen, a living room, and a large terrace that overlooks the central patio of the house. A unique space with abundant natural light and fully equipped amenities to make you feel at home.

70 m²

FEATURES

70m2

UP TO 4 GUESTS

AIR CONDITIONING

SMART TV

HIGH SPEED INTERNET

BATHROOM ACCESORIES

MINIBAR

CEILING FAN

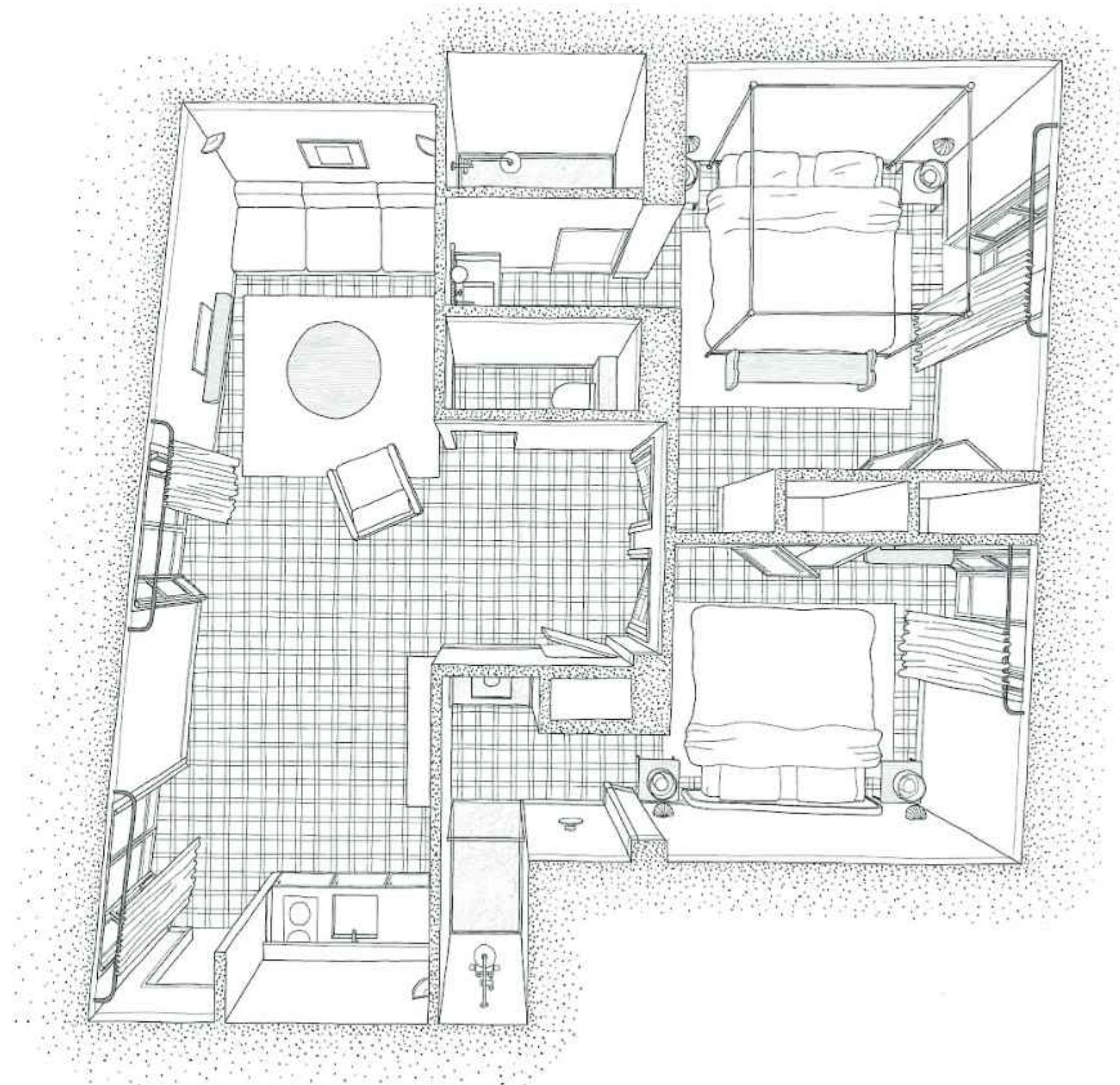
SOFA BED

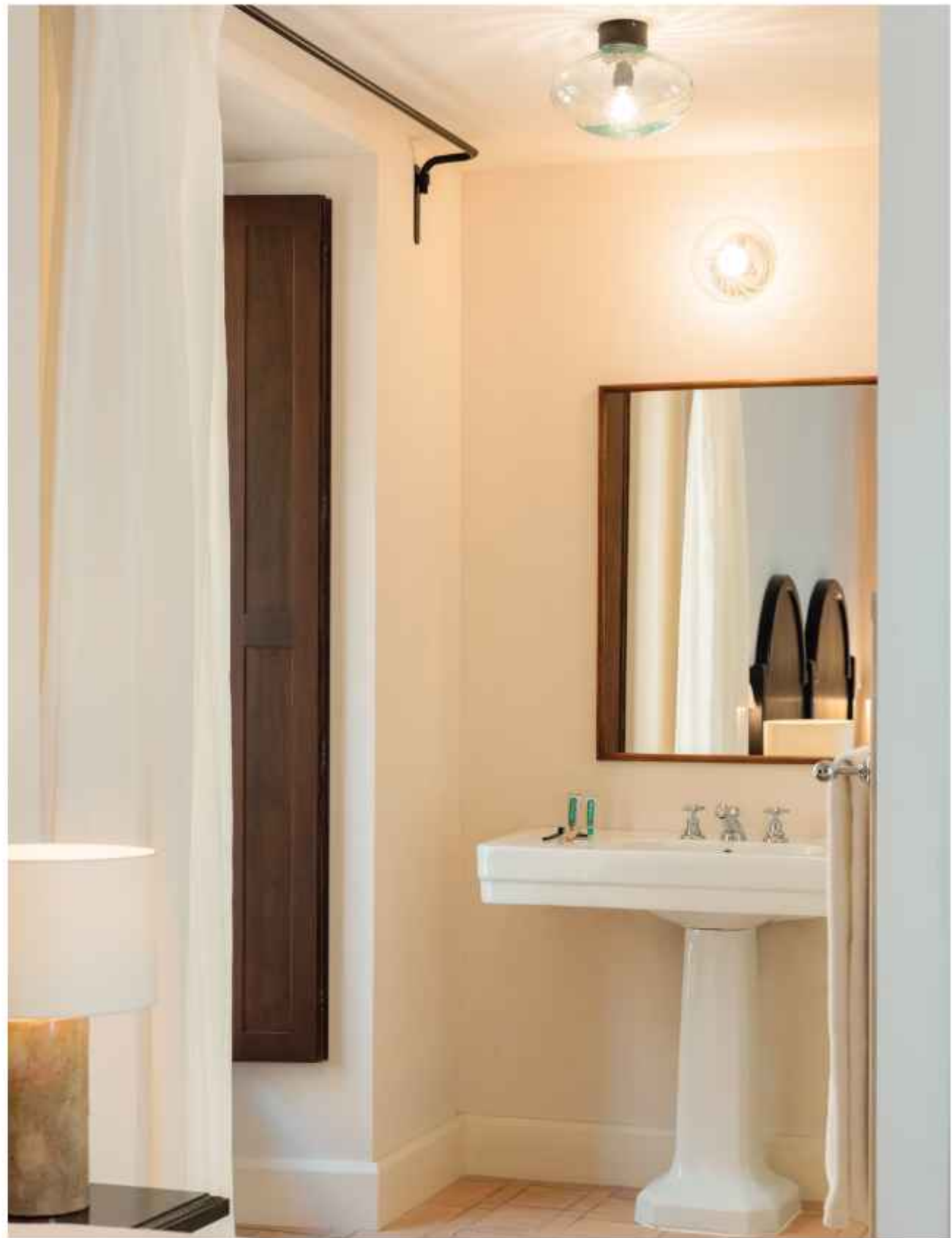
LOUNGE

KITCHEN

AIRPORT PICK UP

TERRACE





PORTELLA PATIO

Located on the second floor, with views of Portella Street and the interior patio, this suite has lots of natural light. It is composed of two bedrooms and independent bathrooms, one of them with a free-standing bathtub, kitchen and living room.

80 m²

FEATURES

80m2

UP TO 5 GUESTS

AIR CONDITIONING

SMART TV

HIGH SPEED INTERNET

BATHROOM ACCESORIES

MINIBAR

CEILING FAN

SOFABED

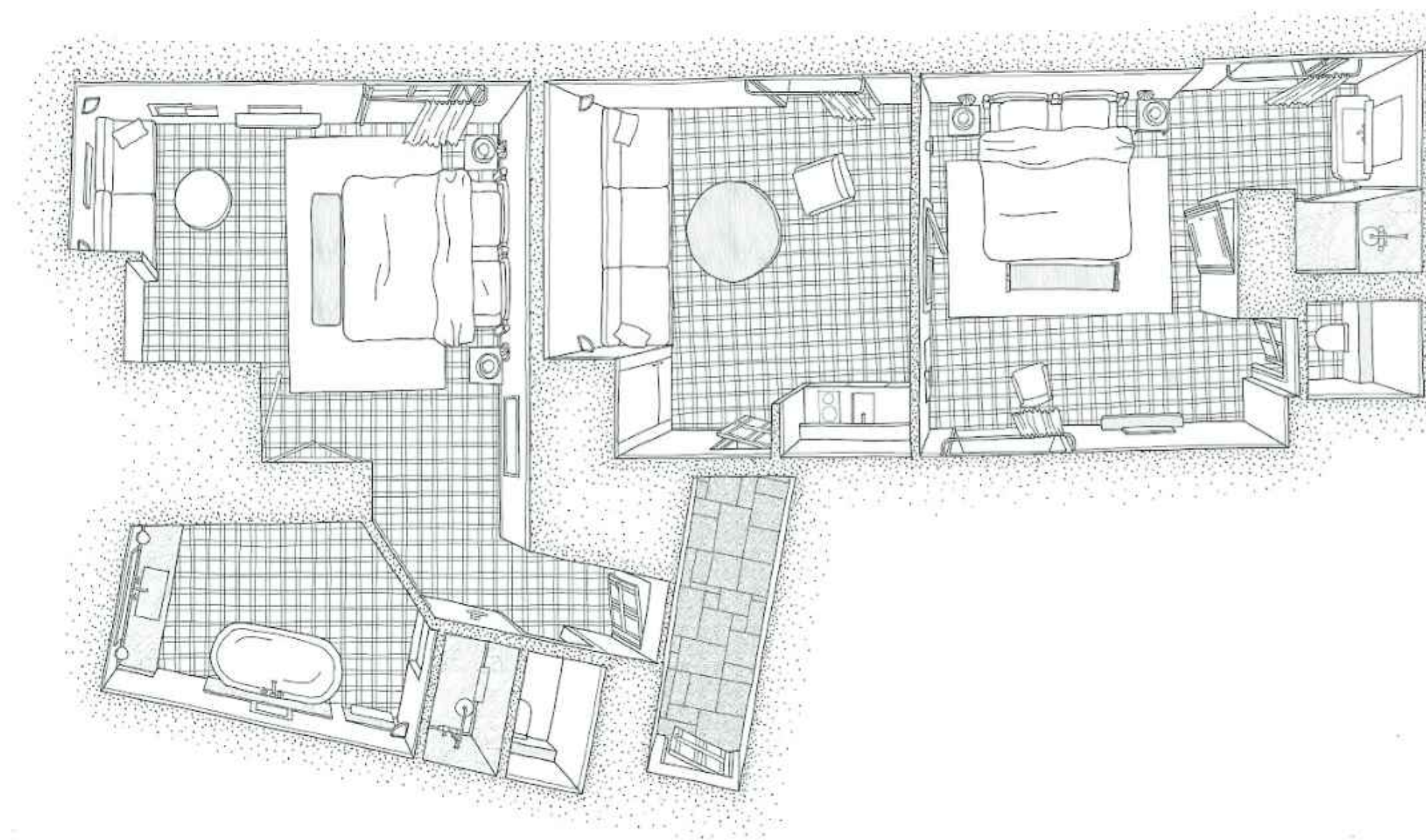
LOUNGE

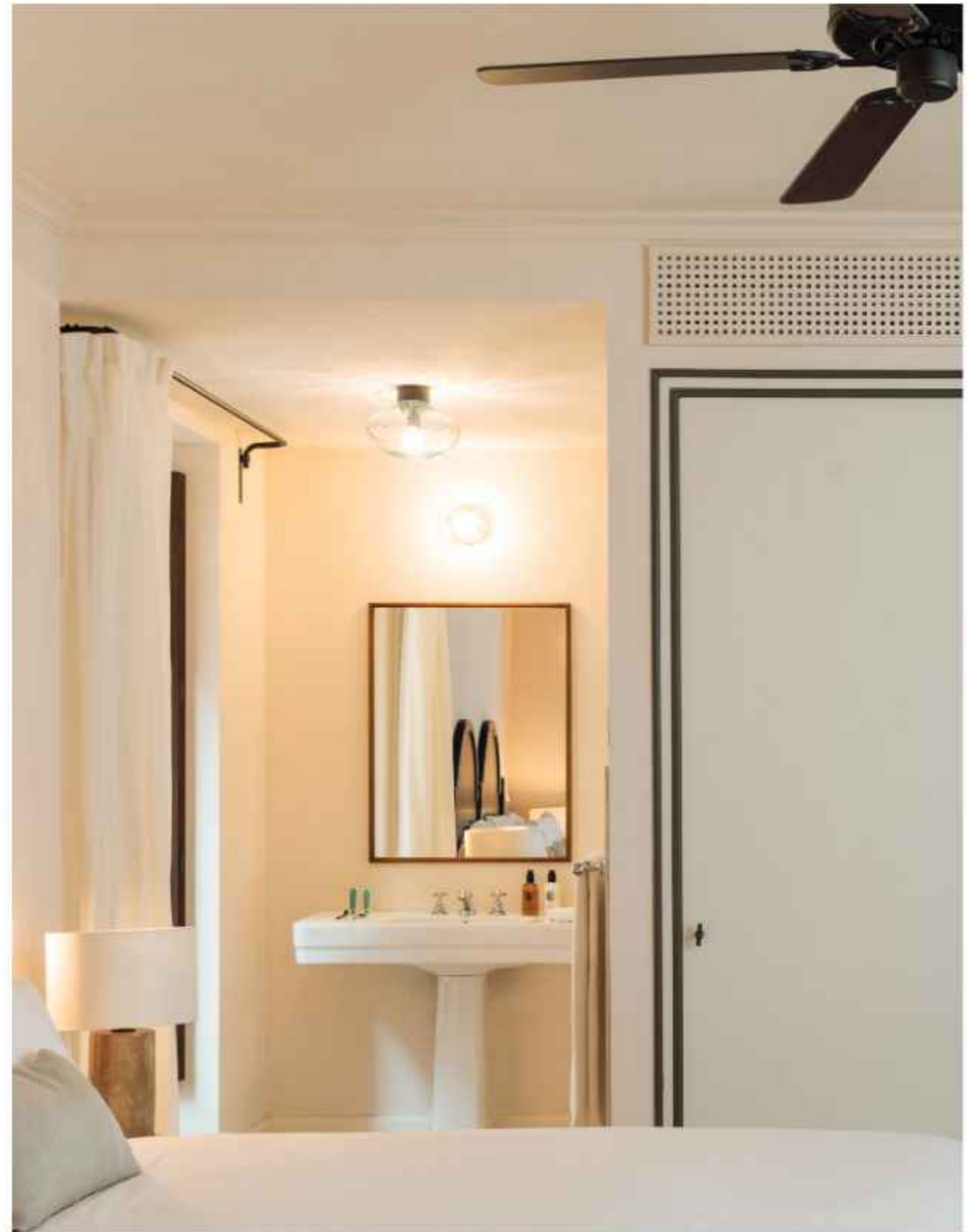
BATHTUB

AIRPORT PICK UP

KITCHEN

COFFEE/TEA MAKER





MIRADOR PORTELLA

Located on the main floor of the building, with high ceilings and views of Portella Street and the interior patio, this suite offers a spacious and bright space. It comprises two bedrooms and independent bathrooms, one of them with a free-standing bathtub, kitchen, living room a viewpoint overlooking Portella Street and gallery overlooking the patio.

75 m²

FEATURES

75m2

AIR CONDITIONING

HIGH SPEED INTERNET

MINIBAR

SOFABED

BATHTUB

KITCHEN

UP TO 5 GUESTS

SMART TV

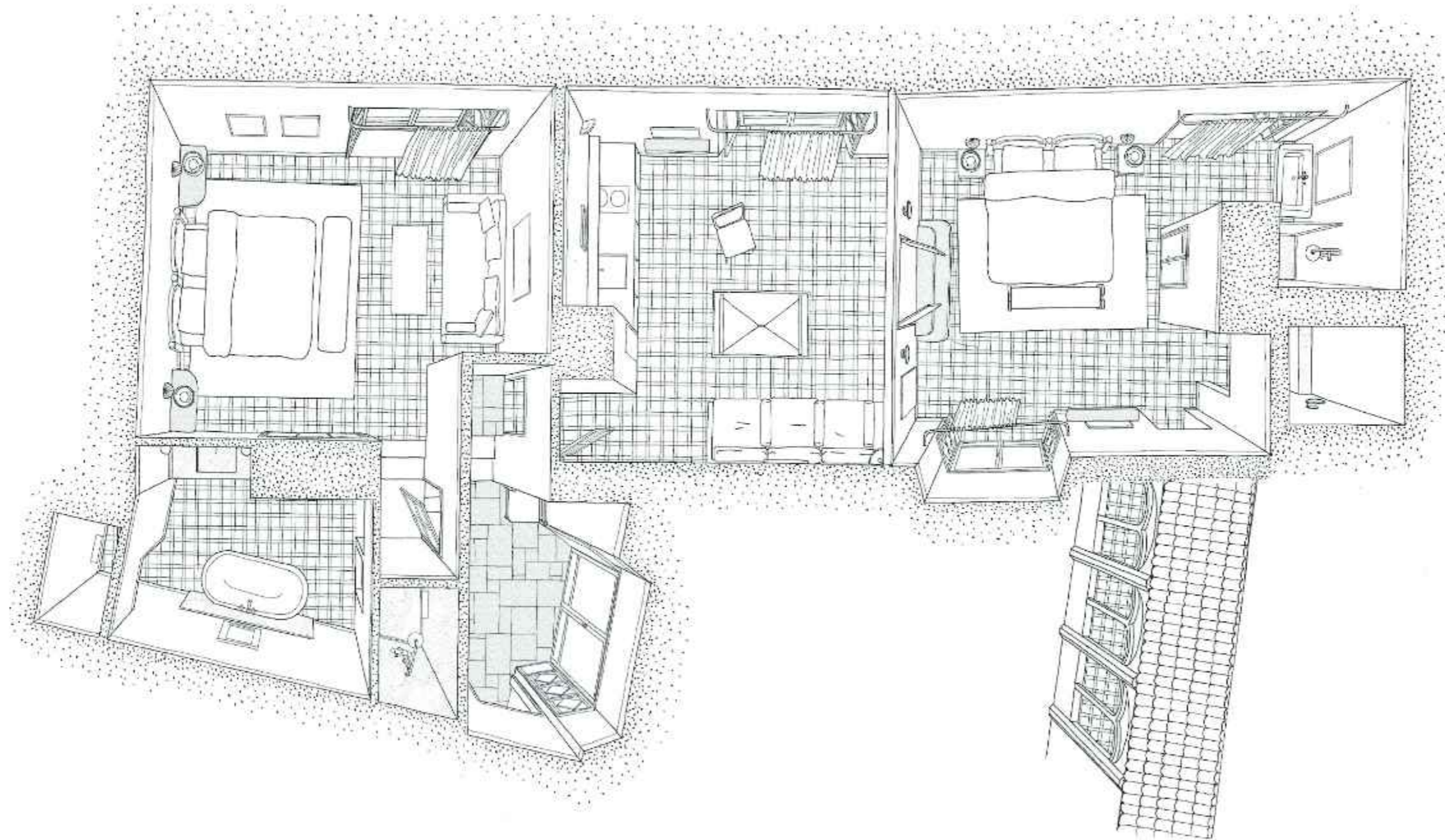
BATHROOM ACCESORIES

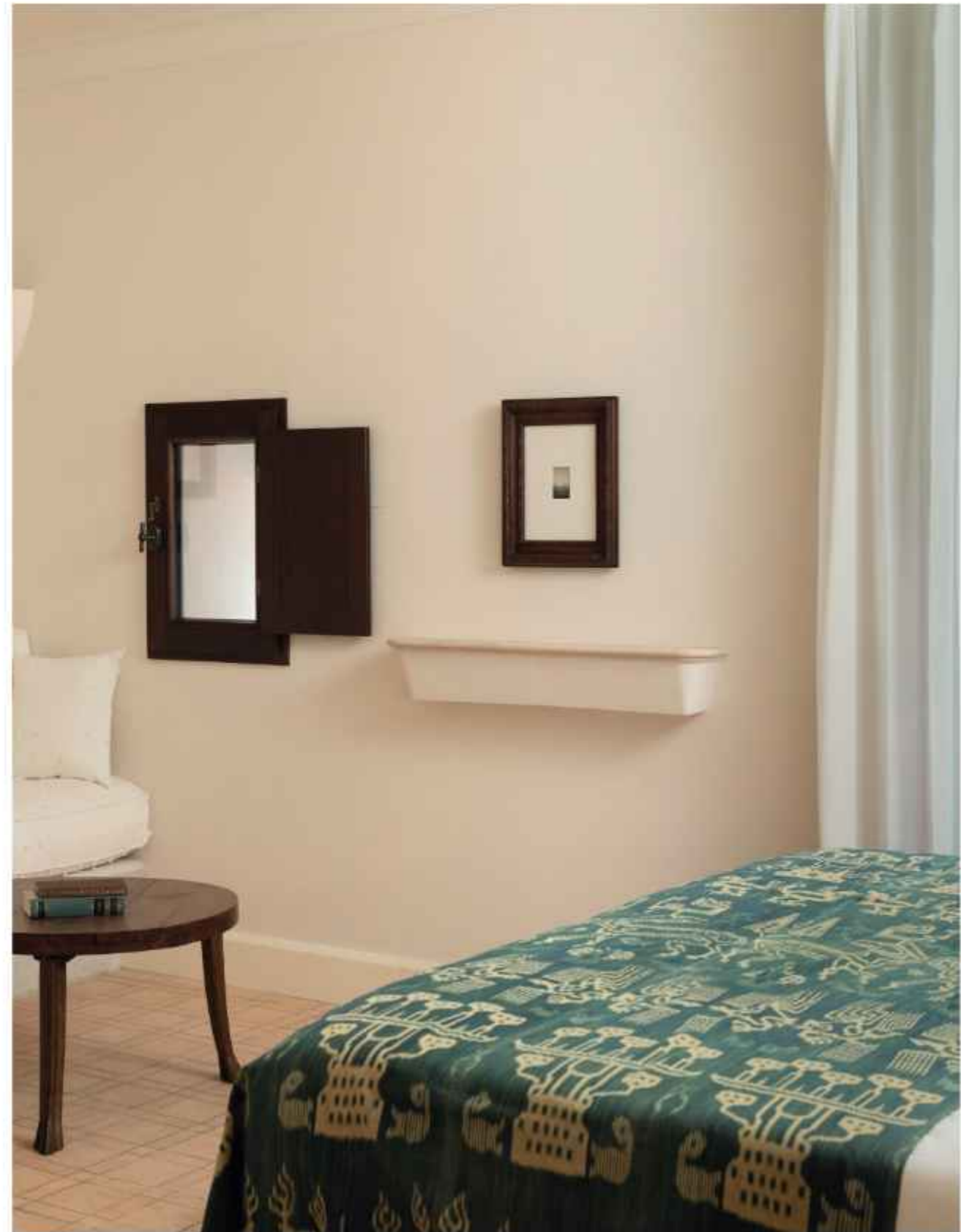
CEILING FAN

LOUNGE

AIRPORT PICK UP

COFFEE/TEA MAKER





ARTIST RESIDENCE

This apartment is the union of four rooms, resulting in an apartment composed of four double rooms with bathroom, one of them with a free-standing bathtub, living room, kitchen and sofa area.

It has lots of light, spaces to enjoy in a group or alone.

126 m²

FEATURES

126m2

AIR CONDITIONING

HIGH SPEED INTERNET

MINIBAR

SOFABED

BATHTUB

KITCHEN

UP TO 5 GUESTS

SMART TV

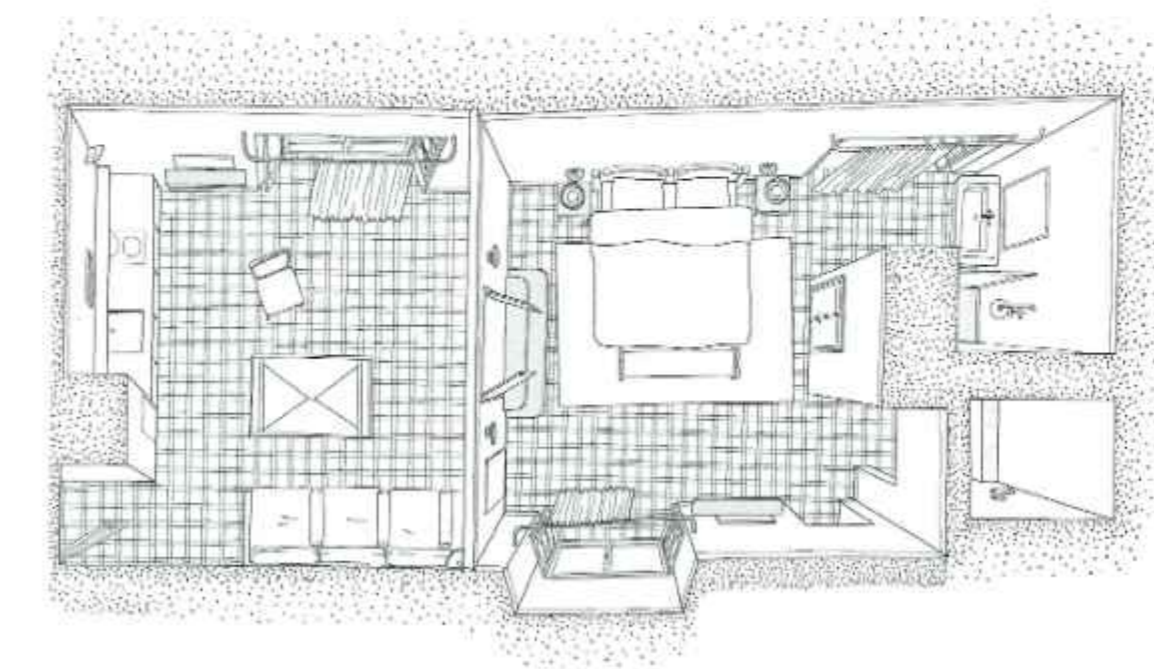
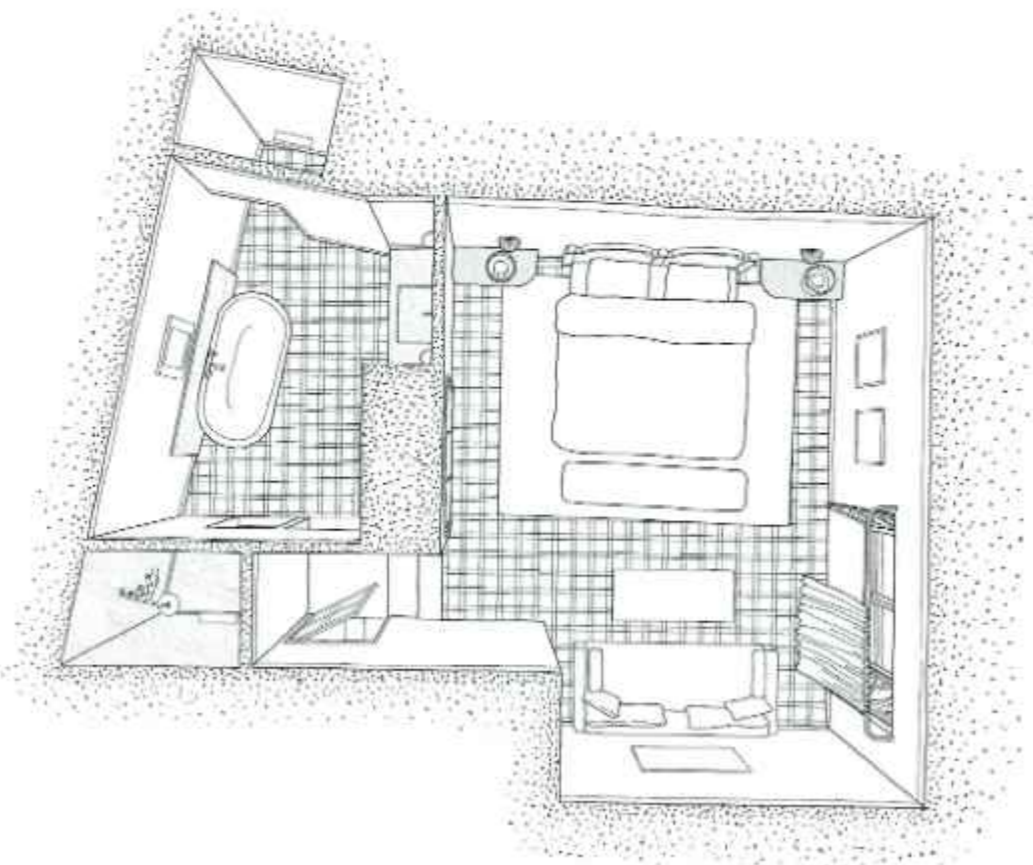
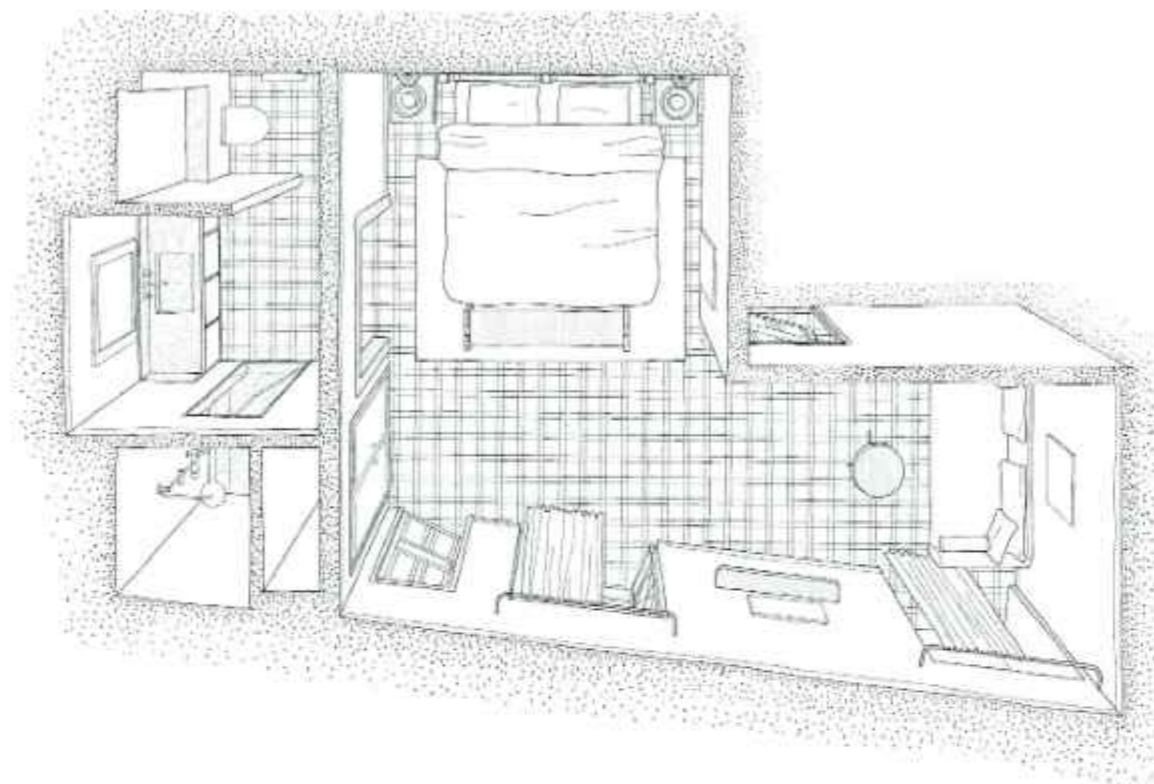
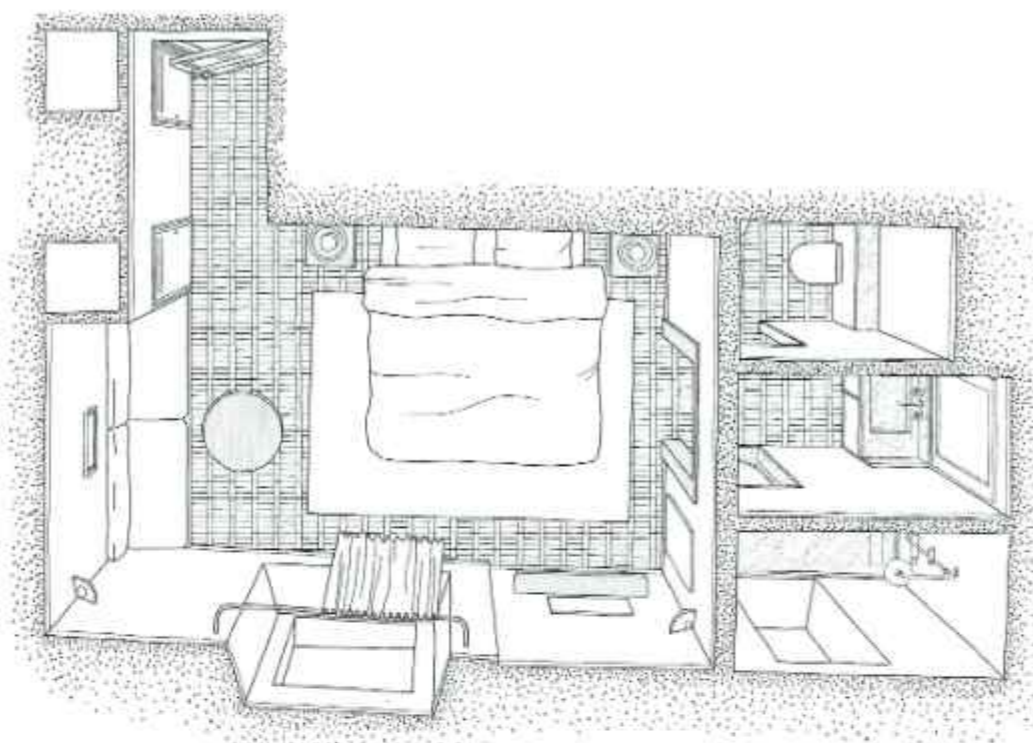
BATHROOM ACCESORIES

CEILING FAN

LOUNGE

AIRPORT PICK UP

COFFEE/TEA MAKER





ALL ROOMS ARE
EQUIPPED WITH

43 to 50-inch high resolution smart TV's

Satellite TV

Air conditioning and heating

Gourmet minibar

Nespresso coffeemaker

Tea Facilities

Safety Deposit

Bluetooth speaker

Iron and board on request

High quality cotton bed linen

Pillow menu

BATHROOMS

Carrara marble walking showers

Bathtubs (selected rooms)

Ionic hairdryer

Towel dryer

Cotton towels

Bathrobe and slippers

Bath amenities

Magnifying Mirror





The Best Places to Stay in Spain, 2024

VOGUE

Hay lugares en los que nada más entrar sientes un aura especial que te envuelve e inspira, y Portella es uno de ellos..

**Condé Nast
Traveler**

Mallorca's New Portella Hotel Is A Dream Of Understated Luxury

Forbes

PORTELLA

Address: Carrer de la Portella, 9
CP - 07001 Palma de Mallorca
Islas Baleares, España

phone number: +34 871 62 62 63
Email: welcome@portellapalma.com
Web: www.portellapalma.com
IG: @portellapalma

GDS Codes:
Amadeus: YX PMIPOR
Sabre: YX 606448
Galileo Apollo: YX I1538
Worldspan: YX PMIPO
dhisco: gl 44098